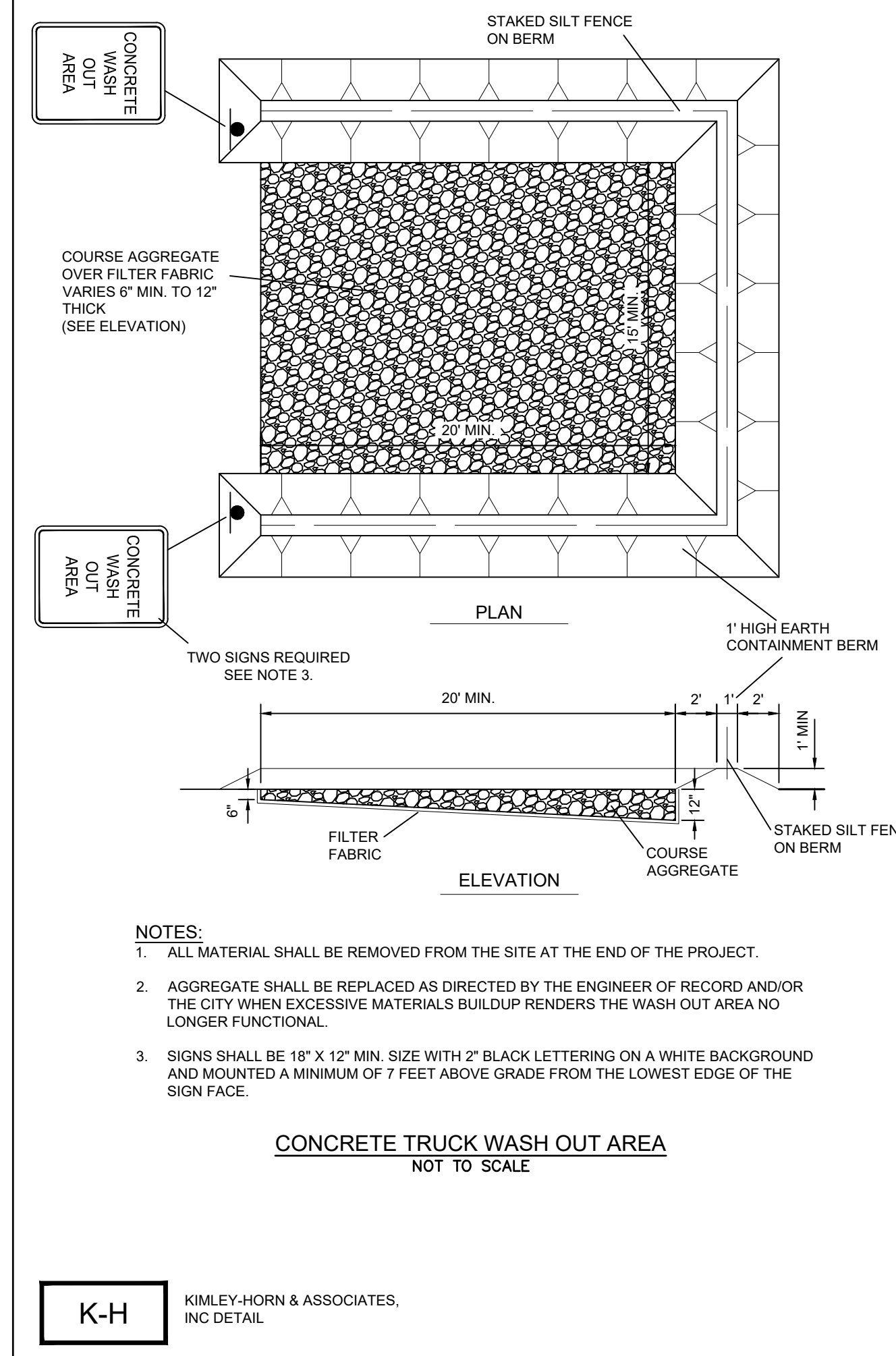
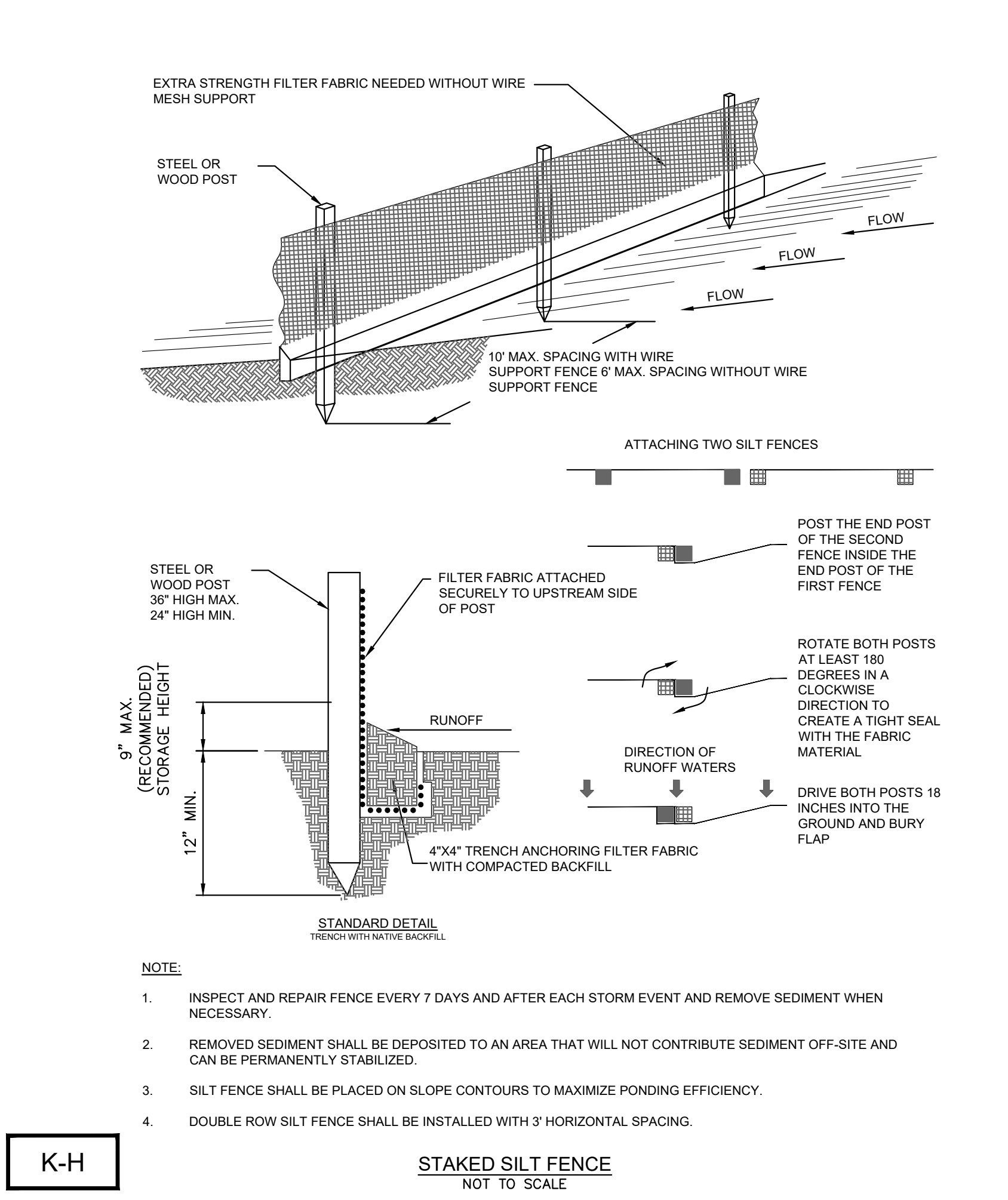
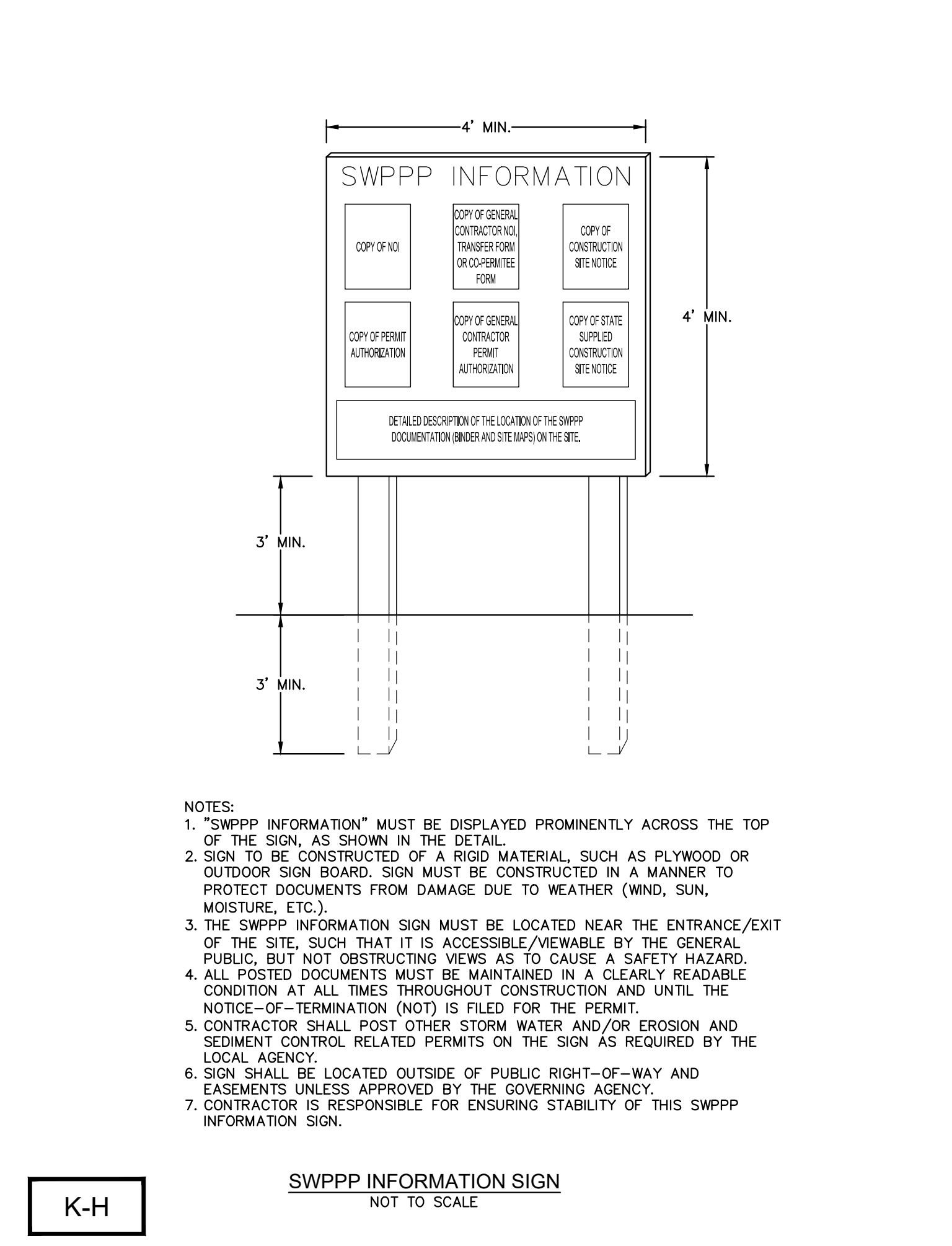
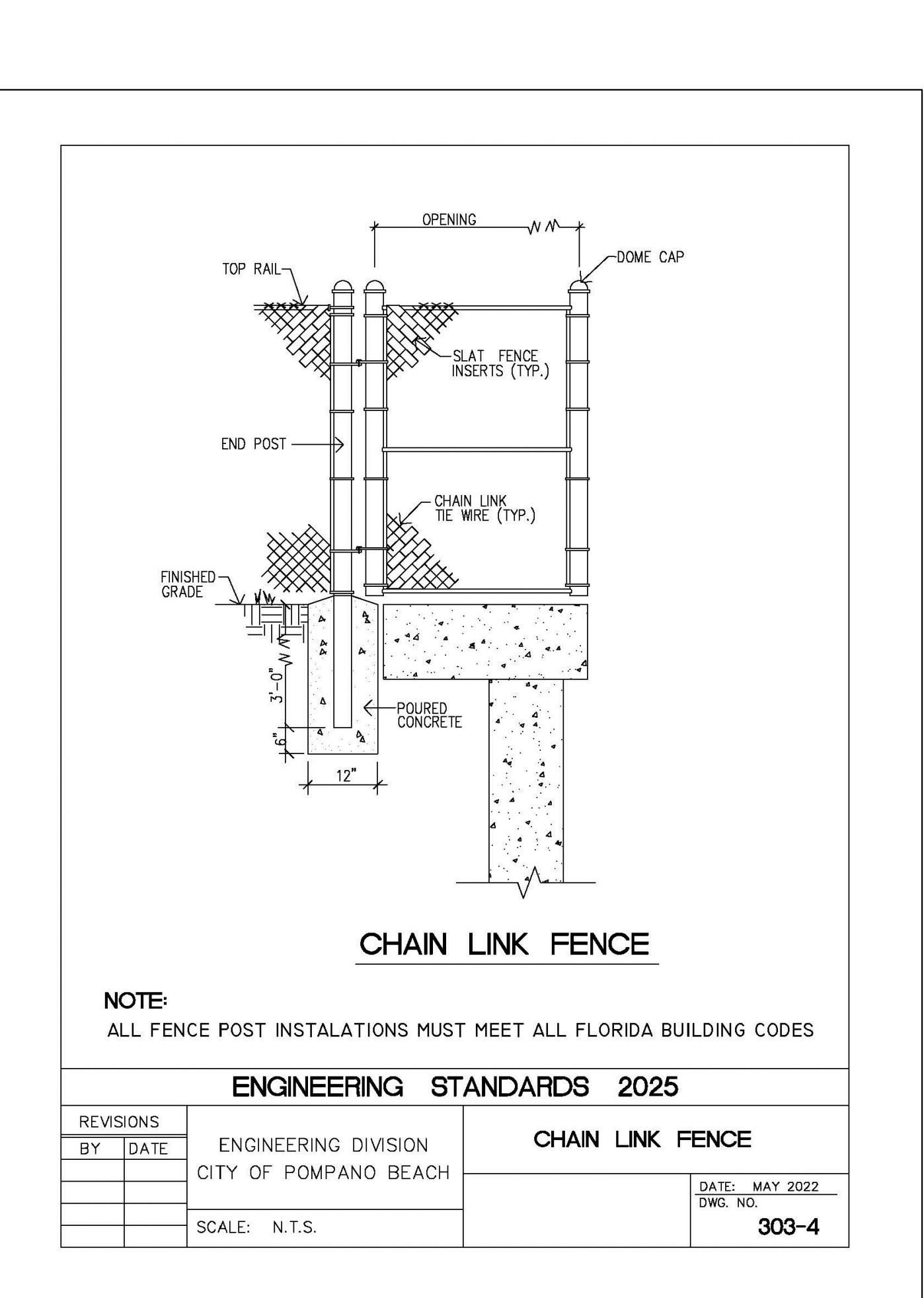
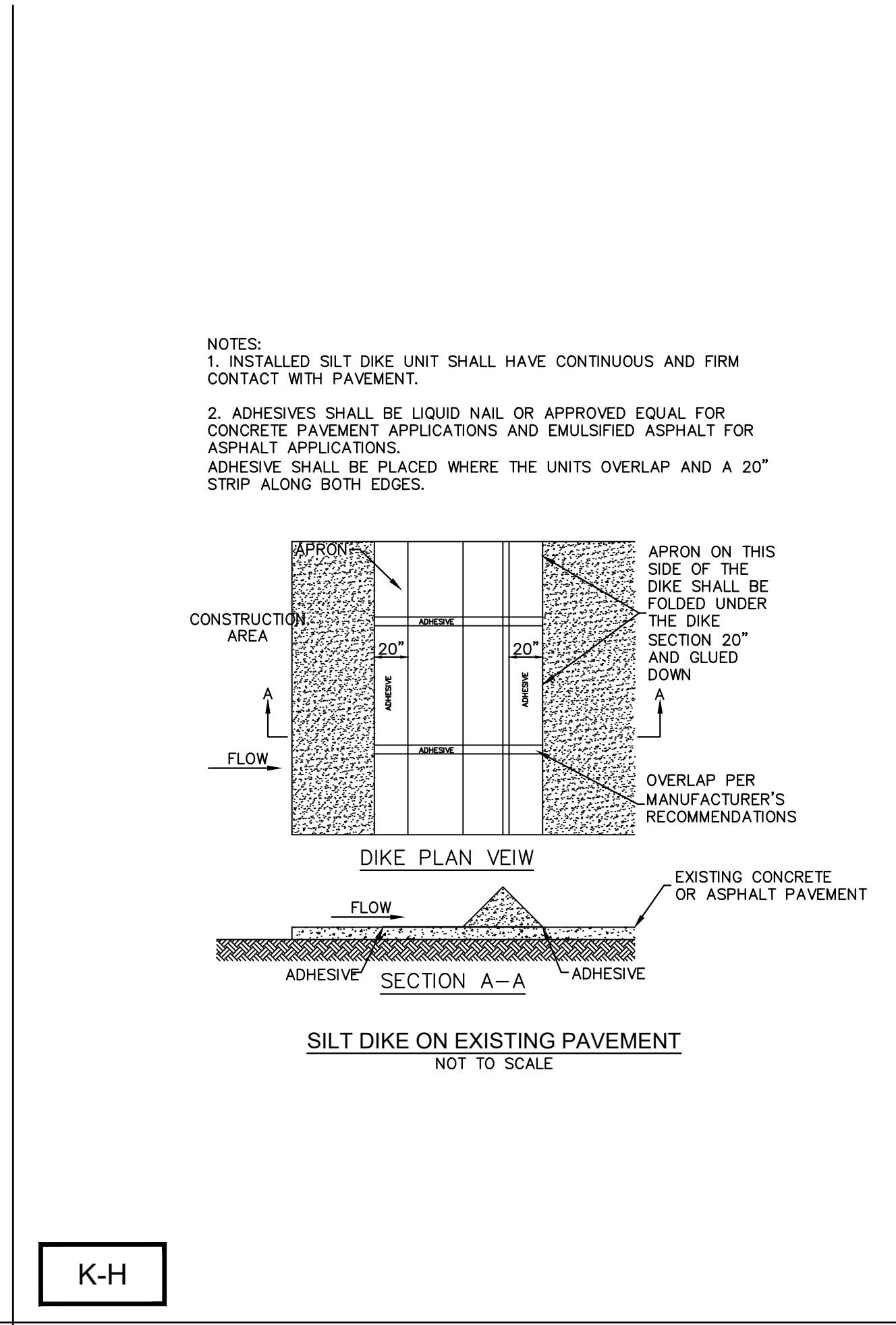
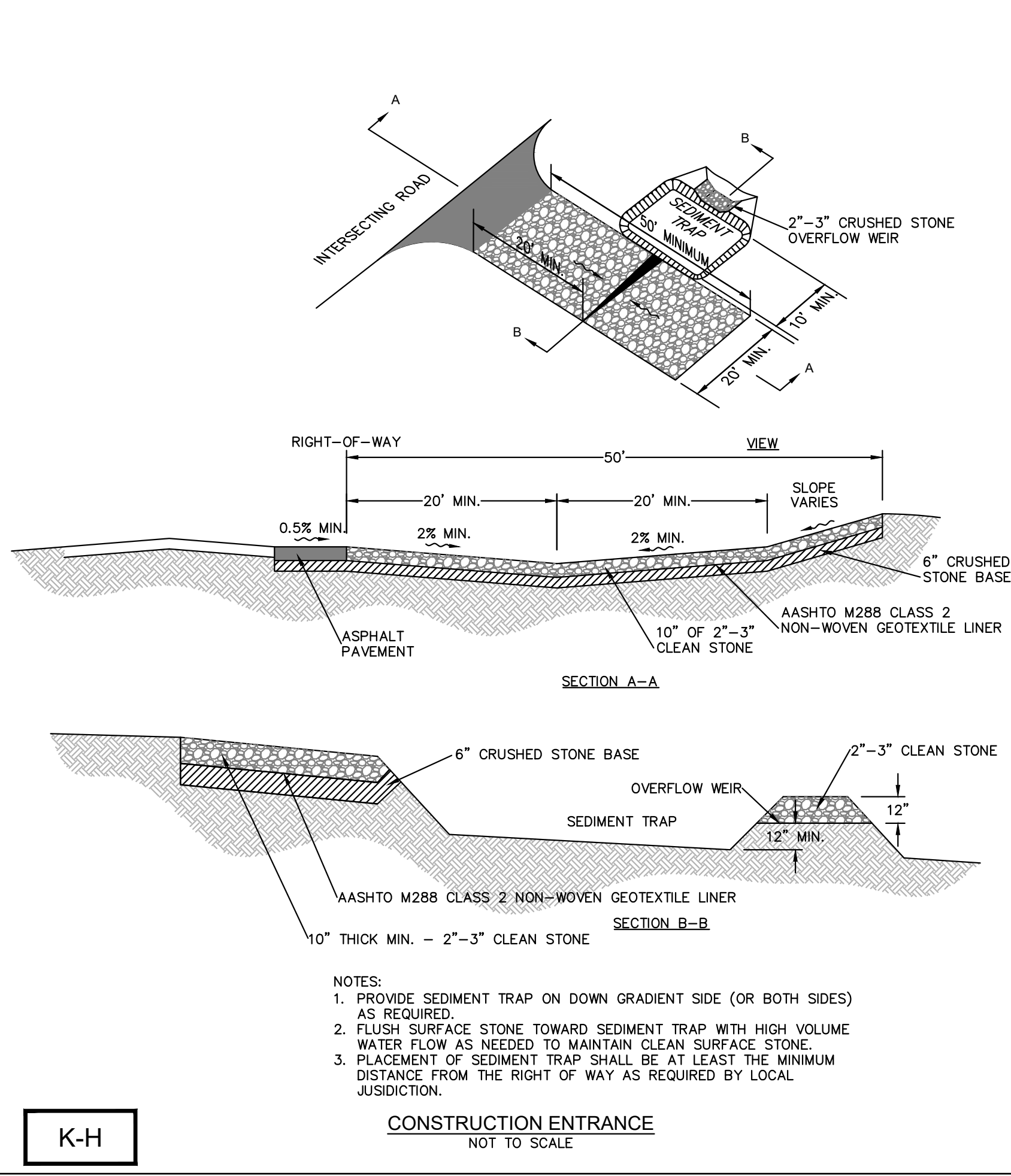
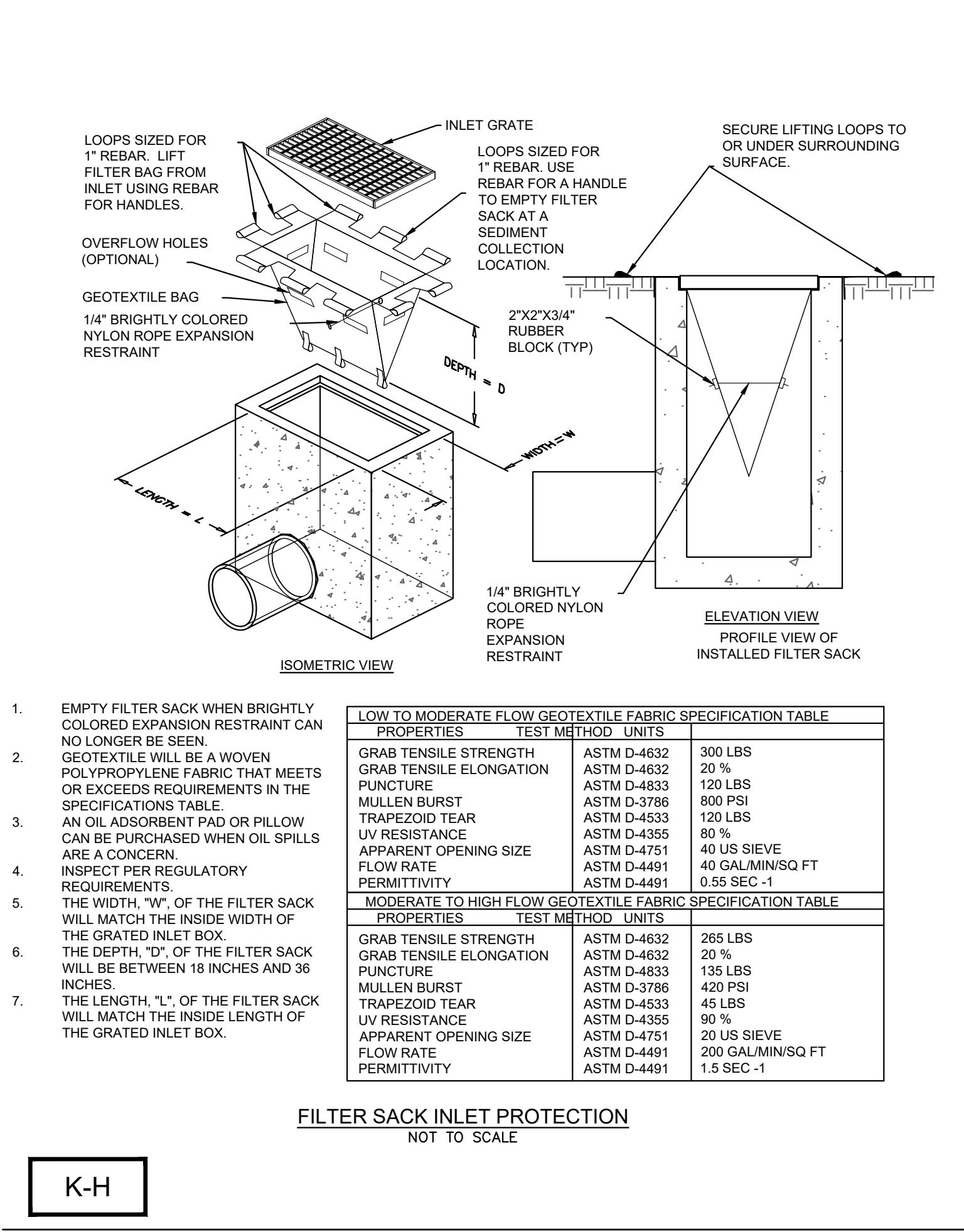


Plotted By:Abdoul Emmanuel Sheet:Mill Creek POMPANO Layout(C-101)DEMOLITION & EROSION CONTROL DETAILS September 09, 2025 06:02:04pm K:\FTL_Civil\043 jobs\04375014 Mill Creek POMPANO\Design\CADD\PlanSheets\C-EROS-DET.dwg
This document, together with the concepts and designs presented herein, is an instrument of service, as intended only for the specific purpose and client for which it was prepared. Reuse of and improper reliance on this document without written authorization and adaptation by Kimley-Horn and Associates, Inc. shall be without liability to Kimley-Horn and Associates, Inc.



| REVISIONS | | BY | DATE |
|-----------|--|----|------|
| | | | |
| | | | |
| | | | |
| | | | |

Kimley»Horn

© 2025 KIMLEY-HORN AND ASSOCIATES, INC.
8201 PETERS ROAD, SUITE 2200, PLANTATION, FL 33324
PHONE: 954-555-5100 FAX: 954-739-2247
WWW.KIMLEY-HORN.COM REGISTRY NO. 35106

LICENSED PROFESSIONAL

KHA PROJECT 043175014
DATE 9/4/2025
SCALE AS SHOWN
DESIGNED BY GVF
DRAWN BY EA
CHECKED BY GVF
DATE:

MODERA POMPANO BEACH
PREPARED FOR
MCRT INVESTMENTS LLC
POMPANO BEACH FLORIDA

DEMOLITION & EROSION CONTROL DETAILS

SHEET NUMBER
C-101